



SS1190

## Master Designed Shower Environments

WORK RIGHT





SS1190

**Open the door to beauty, luxury & ease**

Leave it to the master designers at Work Right to offer the finest in modern shower environments. Like frameless doors that open the space visually like never before. Butted-glass corners for seamless transparency. And a modular framing system that can be used for either standard applications or custom enclosures.

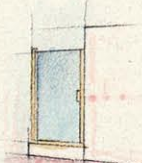


If you can imagine it, Work Right creates it. In just about any size or shape you dream up. Enclose a tub for a peaceful hide-away. Transform a shower into an invigorating steam room. And place your shower center stage as the star of the master bath.



SE11135 with in-line panels

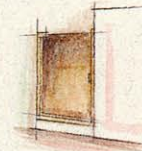
From traditional to contemporary, large or small—Work Right shower environments are featured in over one million of the finest hotels and homes throughout the world.



**Full Height Shower Door Model D-1000**

FOR OPENINGS	HEIGHT	USE MODEL
20" to 21"	66 5/8"	D-1000-20
21" to 22"	66 5/8"	D-1000-21
34" to 35"	66 5/8"	D-1000-34

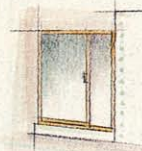
Through  
1" adjustable jambs, header and curb available as option



**Pivot Door Model D-2000**

FOR OPENINGS	HEIGHT	USE MODEL
24 1/2" to 26 1/2"	67 1/4"	D-2000-24 to 26
26 1/2" to 28 1/2"	67 1/4"	D-2000-26 to 28
28 1/2" to 30 1/2"	67 1/4"	D-2000-28 to 30
30 1/2" to 32 1/2"	67 1/4"	D-2000-30 to 32
32 1/2" to 34 1/2"	67 1/4"	D-2000-32 to 34
34 1/2" to 36 1/2"	67 1/4"	D-2000-34 to 36

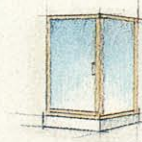
2" adjustable jambs, no header, with full curb



**Stall Shower Model SS-11180**

FOR OPENINGS	HEIGHT	USE MODEL
34" to 42"	69"	SS-11180-42
42" to 48"	69"	SS-11180-48
48" to 60"	69"	SS-11180-60
60" to 72"	69"	SS-11180-72*

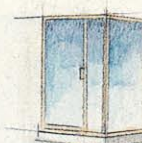
panel and full height door in line or \*door centered between two side panels



**Stall Shower Model SS-1190-34**

FOR OPENINGS	HEIGHT	USE MODEL
Up to 34" x 34"	69"	SS-1190-34

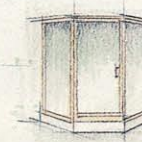
panel and full height door at 90°



**Stall Shower Model SS-1190-38/48**

FOR OPENINGS	HEIGHT	USE MODEL
Up to 38" x 38"	69"	SS-1190-38
Up to 48" x 48"	69"	SS-1190-48

two panels and full height door at 90°



**Stall Shower Model SS-11135-38**

FOR OPENINGS	HEIGHT	USE MODEL
Up to 24" x 27" x 24"	69"	SS-11135-38

two panels at 135° neo-angle to full height door

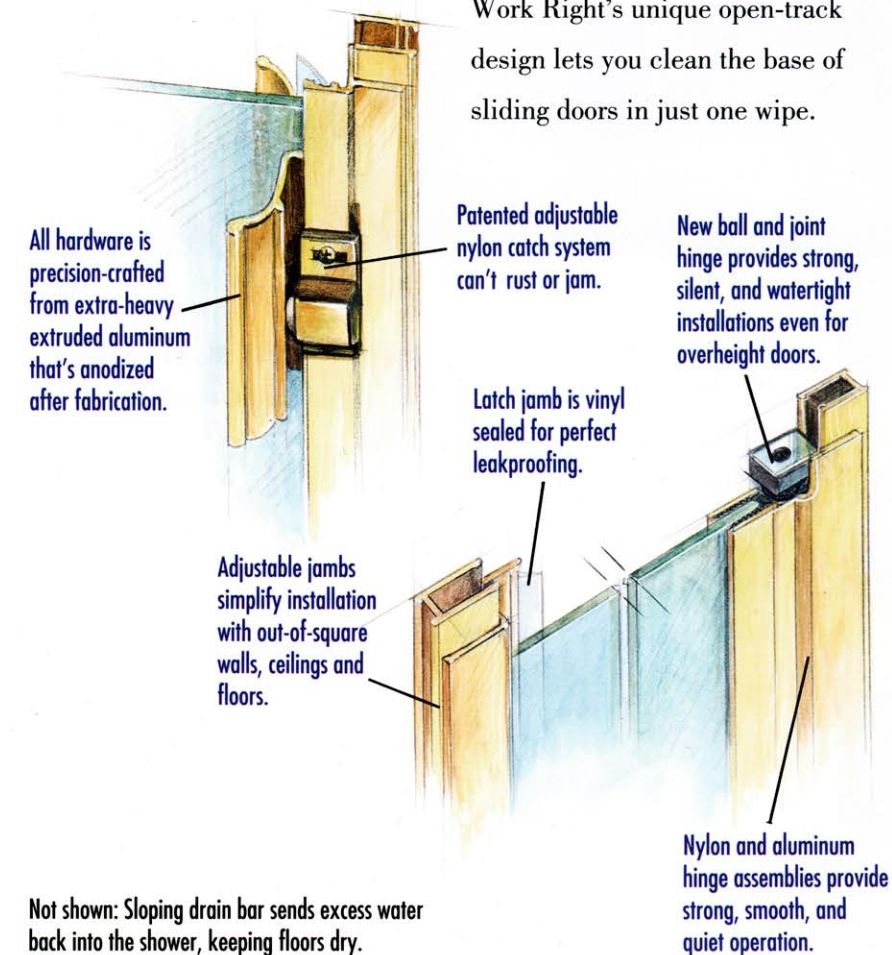


Tempered glass is strong for added family safety.

**Quality craftsmanship**

Work Right shower environments are as beautiful inside as they are outside. We use only the best and most durable materials. Heavy extruded aluminum frames. Tempered safety glass. Vinyl seals. And nylon latches and rollers.

Then we add precision-engineered details developed over 20 years. Finally, we make Work Right showers a breeze to keep clean. Our frameless doors—swinging, sliding and pivot—eliminate grooves and corners that can gather dirt. And Work Right's unique open-track design lets you clean the base of sliding doors in just one wipe.



Not shown: Sloping drain bar sends excess water back into the shower, keeping floors dry.





SE1400

### Step into a world of indulgence

Now bathrooms short on space can be long on style with a Work Right sliding shower enclosure. If you're working with cramped quarters and don't have the room for a swinging door, consider a slider.

Since the glass door won't be hanging open in a bathroom walkway, sliding doors are ideal for young families, the senior set and hotels where guests come and go.

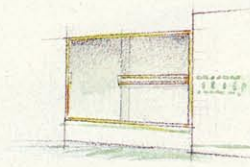
Best of all, sliders blend safety and style. You can design an enclosure wall up to 84". And you won't have those bulky frames at the hinge. So you can enjoy an uninterrupted feeling of airiness and spaciousness that only a continuous expanse of glass can provide.

All sliding models can be ordered as tub or shower enclosures.



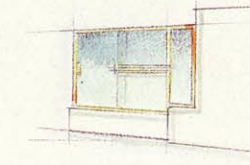
TE1400

## SHOWERSCAPES



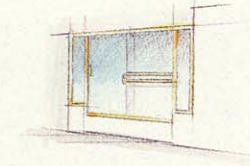
### Sliding Tub/Shower Enclosure 1400 Series

FOR OPENINGS	USE MODEL	
Sliders	Tub	Shower
	57 3/8" HT	70 3/8" HT
Up to 48"		SE-1400-48
48" to 60"	TE-1400-60	SE-1400-60
60" to 66"	TE-1400-66	



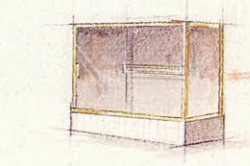
### Sliding Tub/Shower Enclosure 1400 Series

FOR OPENINGS	USE MODEL	
Sliders	Tub	Shower
up to 60" with 12" in-line panel	57 3/8" HT	70 3/8" HT
	TE-1400-1-72	SE-1400-1-72
Sliders	Tub	Shower
Up to 60" with 24" in-line panel	57 3/8" HT	70 3/8" HT
	TE-1400-1-84	SE-1400-1-84



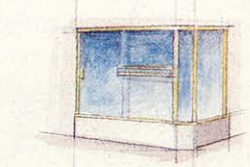
### Sliding Tub/Shower Enclosure 1400 Series

FOR OPENINGS	USE MODEL	
Sliders	Tub	Shower
up to 60" with two 12" in-line panels	57 3/8" HT	70 3/8" HT
	TE-1400-2-84	SE-1400-2-84



### Sliding Tub/Shower Enclosure 1400 Series

FOR OPENINGS	USE MODEL	
Sliders	Tub	Shower
up to 60" with 36" end panel at 90°	57 3/8" HT	70 3/8" HT
	TE-1400-3	SE-1400-3



### Sliding Tub/Shower Enclosure 1400 Series

FOR OPENINGS	USE MODEL	
Sliders	Tub	Shower
up to 60" with 12" & 24" end panels at 135° neo-angle	57 3/8" HT	70 3/8" HT
	TE-1400-4	SE-1400-4

Tracks: 1400 Series ships with open track. To order a "W" shaped track use a 1200 Series designation. All resulting heights will be 3/8" less than the 1400 Series listings.

Glass: 1400 Series and 1200 Series use minimum 3/16" glass.

## DESIGN AND COLOR OPTIONS



Custom color and glass etching are available from many local Work Right dealers.

### Design and color options

High Light™ finished frames color-coordinate with today's bright and beautiful fixtures. Opt for buffed and bright dipped metals or powder-coated paints. In glass, choose from obscure to sparkling clear or warm bronzes to cool frosts. Plus, any model can be fitted with bars that accommodate the thirstiest towels. Ask your local dealer to help you customize your bathroom right down to the last detail.



Standard finishes include silver, gold, black, and white.





**All the luxury  
at half the cost**

Only Work Right gives you a master-designed shower environment with sophisticated elegance—at an affordable price!

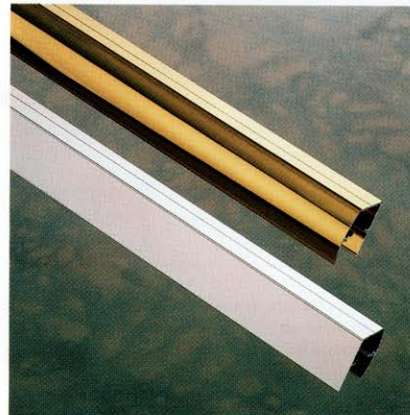
TE1600



Shop and compare. Then come back to Work Right. Because you can get the upscale look and feel of heavy glass and chrome on brass at a fraction of the cost charged by other shower companies.

At Work Right, we believe your shower can add value and pleasure to your day—and to your home. That's why we use sturdy materials and employ talented craftsmen. The result is a shower environment that's master designed for the ultimate in beauty and functionality.

Prestige® sliding door headers offer twice the framing options in just one piece. Use the rounded side to enhance curvacious porcelain. Or flip it to flat for a mirror-bright complement to the crispness of contemporary fixtures.



The Euro design Prestige frames are engineered to accommodate heavier glass and operate with an unmistakable feel of quality.



Prestige showers have no interior towel racks that can be mistakenly used for grab bars. Plus, tubular towel bars complement the soft curve of the frame.

**SHOWERSCAPES**

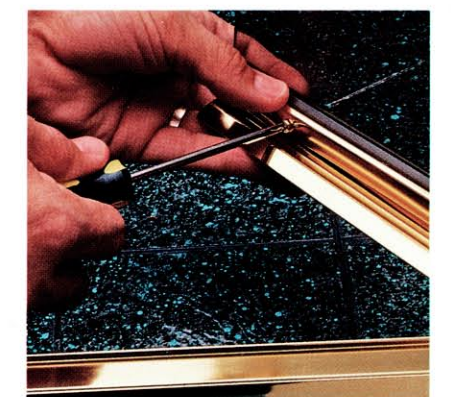
**PRODUCT SUPPORT**



Work Right provides your builder—and you—with color chips, specification sheets, line drawings, installation and maintenance instructions, and design suggestions.

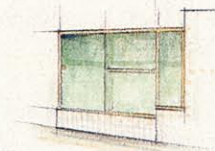
For smooth installation, each model is precut, predrilled and prepackaged with all parts. What's more, our qualified dealer/installers—over 200 nationwide—are trained and backed by comprehensive technical support. The result for you is product performance that's equal to your bath's unique and stunning style.

For complete design information, or the location of your nearest Work Right dealer/installer, call 800/358-9064 (800/862-4995 from California).



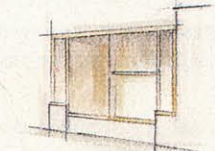
**Prestige Tub/Shower Enclosure 1600 Series**

FOR OPENINGS	USE MODEL	Shower
Sliders	Tub	70 3/8" HT
	57 3/8" HT	SE-1600-48
Up to 48"	TE-1600-60	SE-1600-60
48" to 60"	TE-1600-66	
60" to 66"		



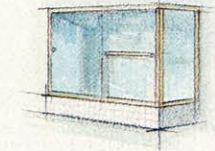
**Prestige Tub/Shower Enclosure 1600 Series**

FOR OPENINGS	USE MODEL	Shower
Sliders	Tub	70 3/8" HT
up to 60" with 12" in-line panel	57 3/8" HT	70 3/8" HT
	TE-1600-1-72	SE-1600-1-72
Sliders	Tub	Shower
Up to 60" with 24" in-line panel	57 3/8" HT	70 3/8" HT
	TE-1600-1-84	SE-1600-1-84



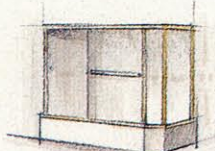
**Prestige Tub/Shower Enclosure 1600 Series**

FOR OPENINGS	USE MODEL	Shower
Sliders	Tub	70 3/8" HT
up to 60" with two 12" in-line panels	57 3/8" HT	70 3/8" HT
	TE-1600-2-84	SE-1600-2-84



**Prestige Tub/Shower Enclosure 1600 Series**

FOR OPENINGS	USE MODEL	Shower
Sliders	Tub	70 3/8" HT
up to 60" with 36" end panel at 90°	57 3/8" HT	70 3/8" HT
	TE-1600-3	SE-1600-3



**Prestige Tub/Shower Enclosure 1600 Series**

FOR OPENINGS	USE MODEL	Shower
Sliders	Tub	70 3/8" HT
up to 60" with 12" & 24" end panels at 135° neo-angle	57 3/8" HT	70 3/8" HT
	TE-1600-4	SE-1600-4

Tracks: 1600 Series ships with open track.

Glass: 1600 Series use minimum 1/4" glass.



## Guide Specifications

### Part 1 General

- 1.1 Work included: Provide shower doors as needed for a complete and proper installation
- 1.2 Related work by others
  - a. Shower receptor base (specify one — tile shower pan, pre-fab shower pan, bathtub)
  - b. Wall surface (specify one — tile, marble, cultured marble, fiberglass/plastic, non-porous watertight material)
  - c. Sealants and caulking (specify a compatible sealant for aluminum and glass)
- 1.3 Quality assurance
  - a. Mock up/sample installation Factory approved mock up sample will represent minimum quality for the work
  - b. Source quality control Factory tests for metal hardness, finish and dimensional tolerance
  - c. Code compliance  
ANSI Z.97.1  
CPSC 16CFR1201 II  
ASTM C1048-85  
USFS DD-G-1403B
- 1.4 Delivery, storage and handling by others
  - a. Deliver to job site door(s) assembled and ready for installation
  - b. Store off ground, under cover, protected from weather and construction activities
  - c. Do not lay glass flat either in transport or storage

### 1.5 Sequencing/Scheduling

Shower door(s) are to be installed only after related work 1.2a and 1.2b is completed

### Part 2 Systems

- 2.1 Specified system or equal  
Work Right Products, Inc.  
Lakeport, CA  
(specify one: D-1000, D-2000, TE-1200, TE-1400, TE-1600, SE-1200, SE-1400, SE-1600, SS-11180, SS-11190, SS-11135)
- 2.2 Materials
  - a. Shower door(s) shall be constructed of (specify clear, obscure, bronzed or custom etched) 3/16" or 1/4" tempered safety glass with all exposed edges polished and rounded
  - b. Aluminum sections shall be 6463 T5 aluminum alloy with a minimum thickness of .062"
  - c. Aluminum sections shall be buffed and bright dipped anodized or powder coat painted (specify finish or color)
  - d. Swinging shower door(s) shall have vinyl seal at both the latch jamb and hinge jamb side of door
  - e. Sliding shower enclosures shall have patented roller brackets at the top of each sliding panel
- 2.3 Fabrication
  - a. Shop assembly of doors and sliding panels shall be completed prior to delivery to job site
  - b. Fabrication of metal for out-of-plumb or out-of-level

- conditions exceeding normal adjustments shall be done prior to installation
- c. Roller brackets for clear glass sliding panels shall be bonded to glass with silicone sealant 24 hours prior to installation, with screws torqued to 28 inchpounds
  - d. Handles shall be secured by means of pressure fitting
  - e. Sliding shower enclosures shall have one piece, pressure fitted handles and roller brackets

### Part 3 Execution

- 3.1 Surface preparation  
Prior to installation of unit, installer shall be sure that surface is free from foreign matter that could compromise the watertight bond of unit to surface (e.g., rust, dirt, grease, paint, mastic, taping compound, etc.)
- 3.2 Installation  
Unit(s) shall be installed consistent with current manufacturer's guidelines and instructions
- 3.3 Field quality control  
Installer shall be responsible to test that door operates smoothly and that at no time does the glass come into contact with metal during normal operation
- 3.4 Adjusting and cleaning  
Installer shall be responsible for adjusting door operation and for securing the owner care and maintenance card to unit

**WORK RIGHT**  
MASTER DESIGNED SHOWER ENVIRONMENTS

Lakeport, CA  
Call (800) 358-9064  
California (800) 862-4995  
Intl. (707) 263-0290  
FAX (707) 263-4048

U.S. Pat. No. 3,827,737; 3,796,405; 3,787,936; 4,484,411



**bema**  
BATH ENCLOSURE  
MANUFACTURERS  
ASSOCIATION